

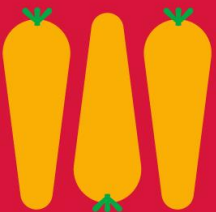
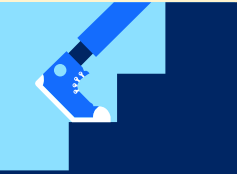


School Garden Network

Northern Rivers

Corinne Martin
Health Promotion Officer, Northern NSW Local Health District

20th September 2024





AGENDA

- Welcome and acknowledgement of country
- Introductions
- Grants
- What are you doing in your gardens?
- Future meetings
 - Format
 - Frequency
 - Day/time/ duration
 - Guest speaker/s



NNSWLHD Primary School Garden Grants

- 45 applications received
- 30 schools below awarded \$500 in June 2024

1. Ballina Public	11. Dunoon Public	21. Maclean Public
2. Biala Special	12. Duranbah Public	22. Murwillumbah East Public
3. Blakebrook Public	13. Empire Vale Public	23. Nimbin Central
4. Bogangar Public	14. Eureka Public	24. Pacific Hope Christian - Tweed Heads Sth
5. Broadwater Public	15. Evans River K-12	25. Sathya Sai College Primary
6. Byron Bay Public	16. Gillwinga Public Sth Grafton	26. St Finbarrs Primary
7. Centaur Primary	17. Gulmarrad Public School	27. The Small School, Murwillumbah
8. Clarence Valley Anglican	18. Kingscliff Public	28. Ulmarra Public
9. Condong Public	19. Larnook Public	29. Urbenville Public
10. Drake Public	20. Lismore South Public	30. Wilsons Creek Public



Over to you

- How are you using your grants?
- What is happening in your school gardens?
- How does your garden link with curriculum learning, canteen, crunch&sip?



Membership/ mailing list



Position	No.
Principal	21
Teacher (special ed 2)	21
Assistant Principal (& teacher 2)	3
School admin/ exec assistant (1)	6
Business manager	3
Deputy Principal	2
Mentor/ teacher's aide & wellbeing	1
Volunteer (parent 10, other 2)	12
Unknown	2
TOTAL	71



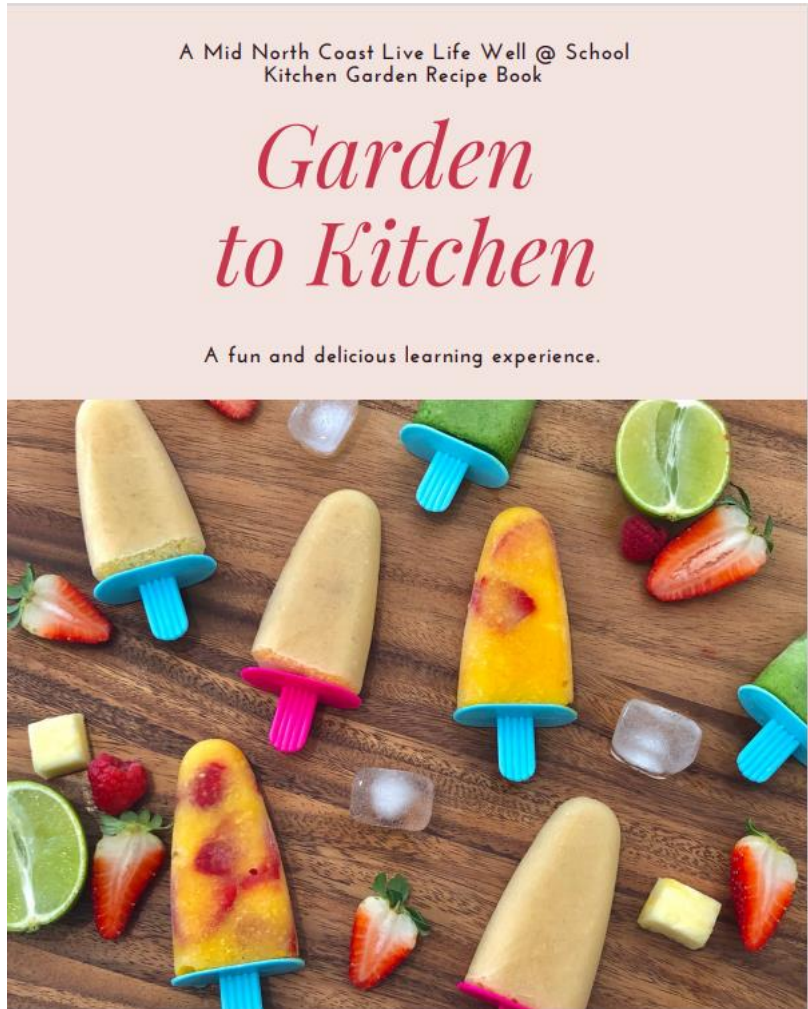
➔ Schools Survey – April 2024

28 responses from 27 schools

Position	No.	%
Principal	7	25.9
Teacher	7	25.9
Parent volunteer	4	14.8
Other volunteer	1	3.7
Other	8	29.6
- Business manager 3		
- Assistant Principal 2		
- SLSO/SAM 2		

Topic	responses	%
Connecting kitchen gardens to cooking/ canteen	22	81
Resources and grant information	22	81
Links to learning and curriculum	21	78
Bushtucker/ native food gardens	19	70
Setting up and growing a kitchen garden	18	67
Composting and worm farms	17	63
Networking and sharing ideas	14	52
Benefits of kitchen gardens	12	44
Propagating and seed saving	12	44
Other:		
- Sharing of experience and knowledge between volunteers. How we can network and support each other.	1	
- How to engage with the school community and wider community to seek support for an in school garden program	1	

How would you like to communicate			
Online meetings	Face to face meetings	Email group	Other
10	7	24	2
			- WhatsApp or Facebook messenger chat & group - Facebook group



Meeting Format

- Format
- Frequency
- Day/time
- Guest speaker/s
- Communication between meetings
 - whatsapp group/ other



Position	Mon 5pm	Fri 1pm	Mon 4.30pm	comments
Teacher	2	2	3	3pm Thurs between 9am & 3pm
Volunteer	1	2		Mornings except Wed
Principal	1		1	
SLSO		3		Fri 1.30pm
SAM		1		
TOTAL	4	8	4	

Potential Guest Speakers

- Allie Godfrey North Byron Farmers Market Manager
Grow your own lunchbox program
- Dr Kate Neale, SCU Digability:Therapeutic Horticulture
- Mehar Ahmad - Bunnings Lismore Activities Coordinator
- Phil Dudley, ABC Gardening Australia magazine
- Costa Georgiadis – Gardening Australia
- Any others





GRANTS



- Stephanie Alexander – Coles Start Small Dream Big grants
- Woolworths Junior Landcare Grants
- Life Education Growing Good Gardens Grants – Ballina, Evans River received grants in 2024
- Roots and Shoots Foundation mini grants – Jane Goodall
- Coles & Planet Ark Sustainable Schools Competition (\$5000 grants)
- Pro veg international – education focus, plant based diets
- Australian Mushroom Growers – free mushroom kits
- Bunnings give up to \$100 of garden seedlings, equipment to schools
- Sustainable schools grants

News

al activity ideas for prima



NNSWLHD Health Promotion Healthy Eating Active Living Team



Corinne Martin (Richmond Valley)

Martina Pattinson (Richmond Valley)

Maxine Molyneux (Ballina/Byron)

Princy Natolanda (Clarence Valley)

Kate Collins (Clarence Valley)

Shelby Craig (Tweed)

Webpage: [Schools and early childhood services - Health Promotion \(nsw.gov.au\)](#)

Email: nnswhld-eatmoveplay@health.nsw.gov.au

corinne.martin@health.nsw.gov.au

